

VANDA RECESS FLUSHBOX

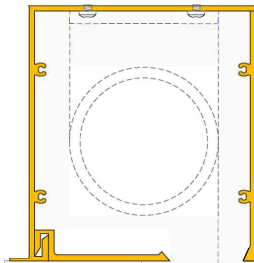
Extrusion & Components *March 2025*



FULL FLUSHBOX

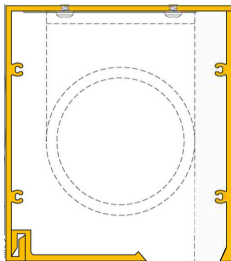


PART BOX



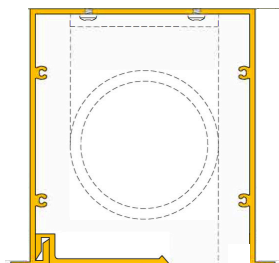
FULL FLUSH BOX EXTRUSION with COVER PLATE

Part No: #VA-FB-100
Comes in 4.2m Lengths



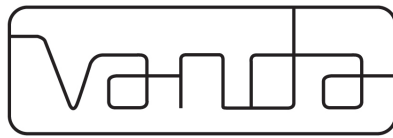
FULL FLANGELESS FLUSH BOX EXTRUSION with COVER PLATE

Part No: #VA-FB-130
Comes in 4.2m Lengths



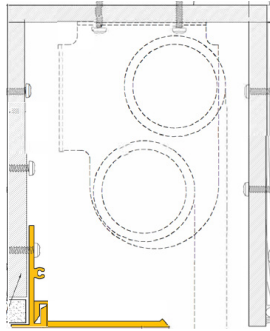
FULL FLUSH BOX (FLANGE ON BOTH SIDES) with COVER PLATE

Part No: #VA-FB-140



VANDA RECESS FLUSHBOX

Extrusion & Components *March 2025*



PART FLUSH BOX EXTRUSION with standard COVER PLATE

Part No: #VA-PB-101 (comes in 4.2m lengths)

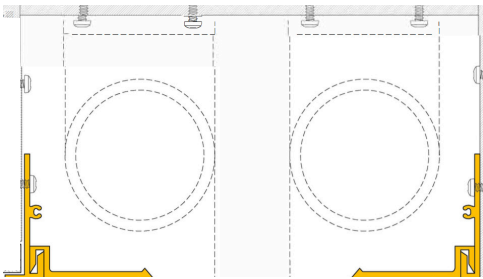
PART FLUSH BOX EXTRUSION with extended COVER PLATE

Part No: #VA-PB-201 (comes in 4.2m Lengths)

Partbox Bracket Extrusion - #VA-PB-100

Cover plate only - #VA-FB-055

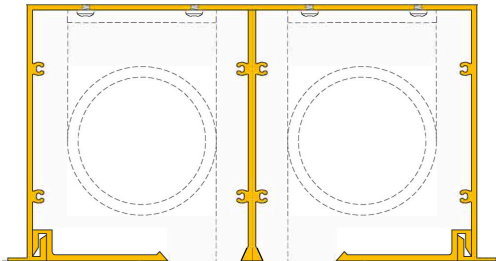
Extended Cover plate only - #VA-FB-075



VANDA DOUBLE BLIND RECESS with PART BOX

Part No: #VA-PB-101 / 2

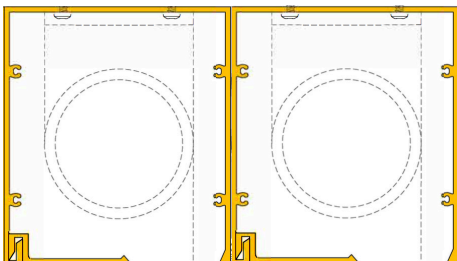
Comes in 4.2m Lengths



VANDA DOUBLE BLIND RECESS with Flange

Part No: #VA-FB-600

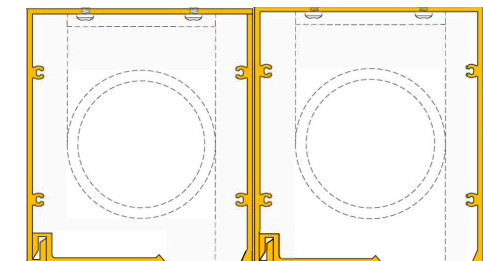
Comes in 4.2m Lengths



VANDA DOUBLE FLUSHBOX MOUNTED SIDE BY SIDE **FLANGELESS**

Part No: #VA-FB-500

Comes in 4.2m Lengths



VANDA DOUBLE FLUSHBOX MOUNTED SIDE BY SIDE

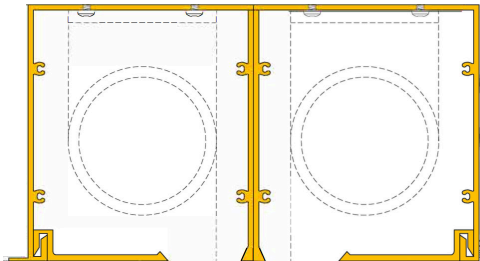
Part No: #VA-FB-400

Comes in 4.2m Lengths



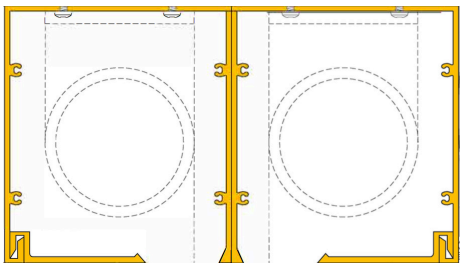
VANDA RECESS FLUSHBOX

Extrusion & Components *March 2025*



VANDA DOUBLE FLUSHBOX MOUNTED SIDE BY SIDE

Part No: #VA-FB-300
Comes in 4.2m Lengths



VANDA DOUBLE FLUSHBOX MOUNTED SIDE BY SIDE FLANGELESS

Part No: #VA-FB-200
Comes in 4.2m Lengths



Single Endcap



Double Endcap

FLUSHBOX END CAPS

Part No: #VA-FB-110 (Supplied as a pair)

FLUSHBOX END CAPS with (FLANGE REMOVED)

Part No: #VA-FB-131 (Supplied as a pair)

FLUSHBOX DOUBLE END CAPS

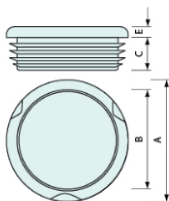
Part No: #VA-FB-220 (Supplied as a pair)

FLUSHBOX DOUBLE END CAPS

(with Flange removed)

Part No: #VA-FB-221 (Supplied as a pair)

A = 42mm
B = 37mm
C = 11.5mm
E = 5mm



PLASTIC CABLE INSULATOR PLUG

Part No: #VA-FB-120

Purchased individually

Available in White or Black



BUTTING PIN

Part No: #VA-FB-150

(to enable precise line up of two butting Flush Box Extrusions) Supplied as a pair



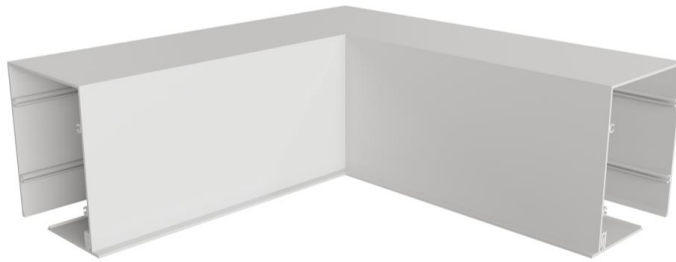
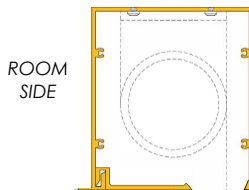
VANDA RECESS FLUSHBOX

90 Degree Mitre Configuration Options

March 2025

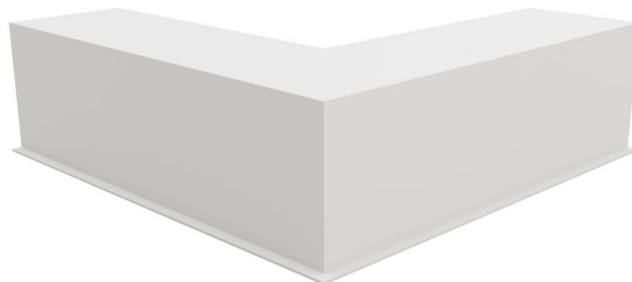
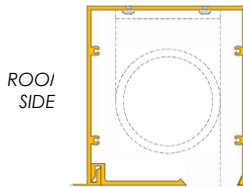
VA.FB.501B – 90 Degree INTERNAL Mitre Corner Section

FLANGE ON ROOM SIDE – BACK ROLL BLIND #
TO SUIT FULL FLUSHBOX VA.FB.100 (Single Flange)



VA.FB.504B - 90 Degree EXTERNAL Mitre Corner Section

FLANGE ON ROOM SIDE – BACK ROLL BLIND #
TO SUIT FULL FLUSHBOX VA.FB.100 (SINGLE FLANGE)



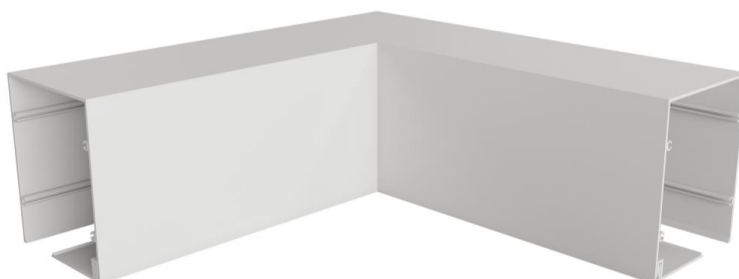
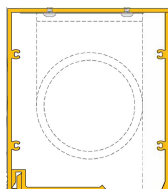
Back roll blinds at corner junction - feel free to enquiry about gaps between blinds at corner sections

VA.FB.502B - 90 Degree INTERNAL Mitre Corner Section

FLANGELESS BACK ROLL BLIND #
OR
VA.FB.502F - 90 Degree EXTERNAL Mitre Corner Section

FLANGELESS FRONT ROLL BLIND

TO SUIT FULL FLUSHBOX VA.FB.130 (FLANGELESS)



Back roll blinds at corner junction - feel free to enquiry about gaps between blinds at corner sections



VANDA RECESS FLUSHBOX

90 Degree Mitre Configuration Options

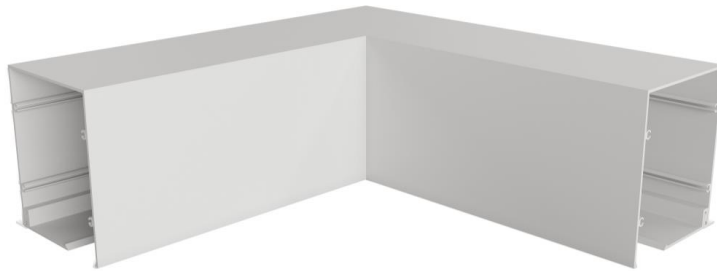
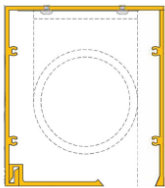
March 2025

VA.FB.503F - 90 Degree INTERNAL Mitre Corner Section
FLANGELESS FRONT ROLL BLIND

OR

VA.FB.503B - 90 Degree EXTERNAL Mitre Corner Section
FLANGELESS BACK ROLL BLIND #

TO SUIT FULL FLUSHBOX VA.FB.130 (FLANGELESS)

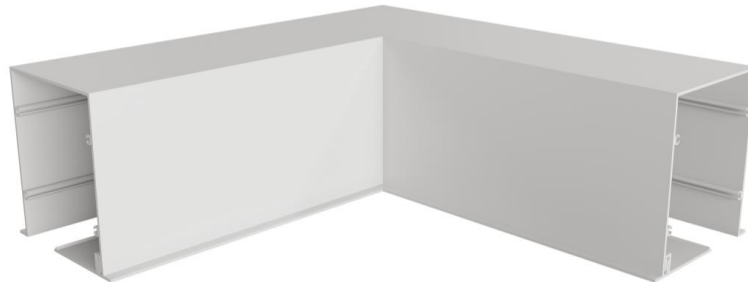
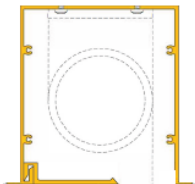


VA.FB.506B - 90 Degree INTERNAL Mitre Corner Section
FLANGE ON BOTH SIDES – BACK ROLL BLIND #

OR

VA.FB.506F - 90 Degree EXTERNAL Mitre Corner Section
FLANGE ON BOTH SIDES – FRONT ROLL BLIND

TO SUIT FULL FLUSHBOX VA.FB.140 (DOUBLE FLANGE)

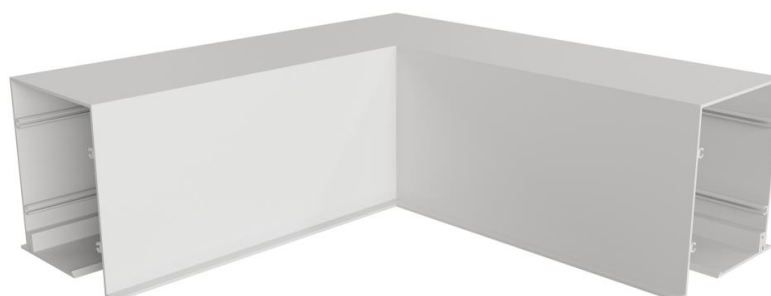
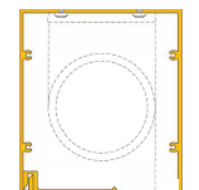


VA.FB.507F - 90 Degree INTERNAL Mitre Corner Section
FLANGE ON BOTH SIDES – FRONT ROLL BLIND

OR

VA.FB.507B - 90 Degree EXTERNAL Mitre Corner Section
FLANGE ON BOTH SIDES – BACK ROLL BLIND #

TO SUIT FULL FLUSHBOX VA.FB.140 (DOUBLE FLANGE)



Back roll blinds at corner junction - feel free to enquire about gaps between blinds at corner sections